



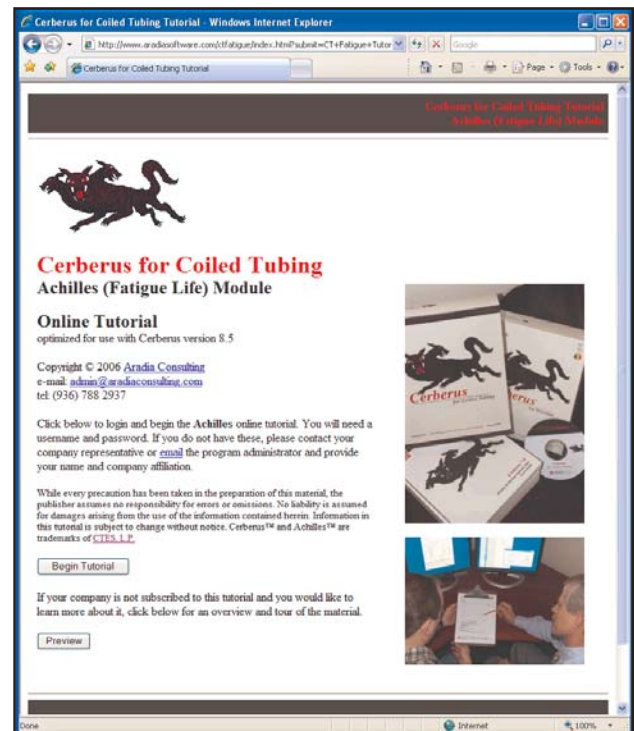
Cerberus Modeling Software

Online Tutorials

Get the most value from your Cerberus license by training more people at lower cost! Online tutorials are now available for the Cerberus modeling suite, written by one of the original software designers.

- Worked examples step you through entering data, running calculations and creating reports.
- Written for new or inexperienced users.
- Students enter classroom familiar with software, can cover advanced material more quickly.
- See hundreds of screen captures, learn valuable tips and short-cuts.
- Monitor progress with multiple choice quizzes.
- Certify employees as qualified Cerberus users.

Preview the tutorials now!
www.cerberustutorials.com



Cerberus for Coiled Tubing

- Fatigue Modeling (Achilles™)
- Forces Modeling (Orpheus™)

Cerberus for Wireline

- Tool Deployment (Orpheus™)

Learn how to create and maintain the fatigue records for a CT string, using both Orion™ and manually-recorded job data.

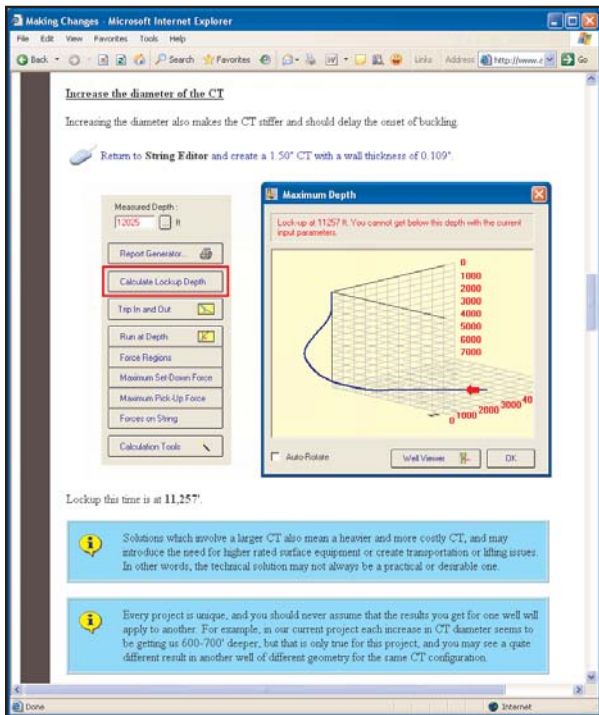
Investigate the feasibility of retrieving a lost gun from a horizontal well, then look at pressure and flow effects as the CT is deployed.

Open and cased hole examples are examined. Compression, high tension, weak point selection and lift effects due to flow are just some of the topics covered as you learn how to plan your next job.

“With over 100 students in the first year, the Cerberus tutorial has become an essential part of our engineering training” - Product Line Manager, Baker Atlas

Tutorial Book

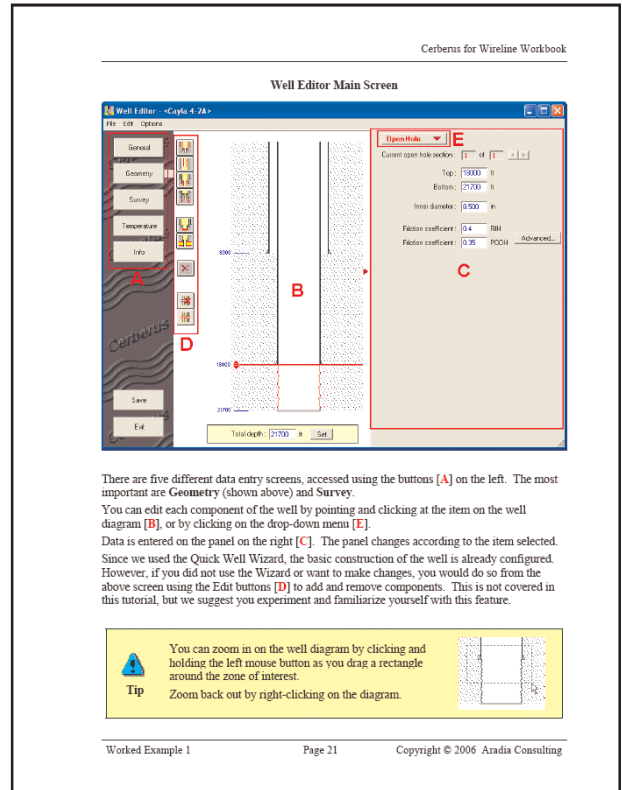
Each tutorial is accompanied by a training guide, available only to online subscribers. We recommend you obtain a copy for each student as a reference and for studying offline. This is especially valuable for field personnel who can use their waiting time to complete the tutorials when an internet connection is not available.



Sample screen from the online tutorial

Continual Assessment + Certification

Each worked example is followed by an online test. Your company can use these tests to evaluate the progress made by each employee; set a minimum score requirement before they attend a class or model actual operations; and qualify them as a trained Cerberus user using the Certification Exam.

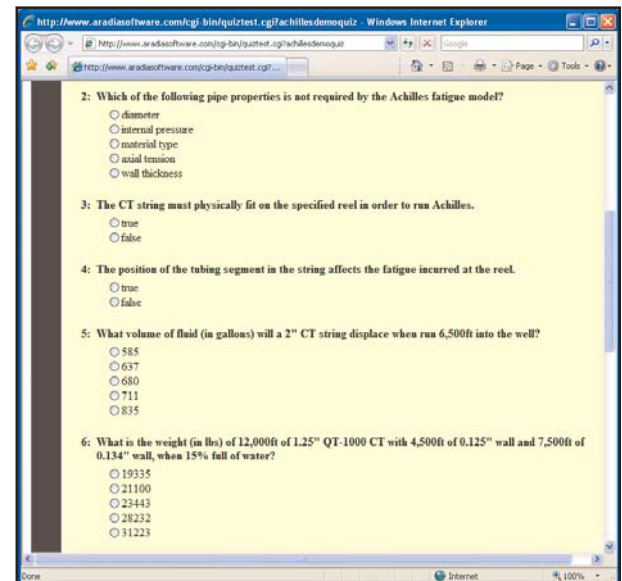


There are five different data entry screens, accessed using the buttons [A] on the left. The most important are Geometry (shown above) and Survey. You can edit each component of the well by pointing and clicking at the item on the well diagram [B], or by clicking on the drop-down menu [E]. Data is entered on the panel on the right [C]. The panel changes according to the item selected. Since we used the Quick Well Wizard, the basic construction of the well is already configured. However, if you did not use the Wizard or want to make changes, you would do so from the above screen using the Edit buttons [D] to add and remove components. This is not covered in this tutorial, but we suggest you experiment and familiarize yourself with this feature.

Tip You can zoom in on the well diagram by clicking and holding the left mouse button as you drag a rectangle around the zone of interest. Zoom back out by right-clicking on the diagram.

Worked Example 1 Page 21 Copyright © 2006 Aradis Consulting

Sample page from the wireline training guide



Typical quiz questions

For more information about how the tutorials can help you maximize your Cerberus license, please visit www.cerberustutorials.com or contact your nearest CTES representative.

